

**ROPE DESIGN OPTIONS**

- DIEPA **K40** Ordinary lay
- ▶ DIEPA **K43** Ordinary lay with internal plastic component
- DIEPA **K45** Lang lay
- DIEPA **K48** Lang lay with internal plastic component

**PROPERTIES**

- Rotation resistant
- Compacted outer strands
- Compacted rope
- Special rope for drilling rigs with Kelly-bar

**TECHNICAL DATA**

Load-bearing wires in outer strands/ RCN acc. to ISO 4309	105 Ø 18–46 mm	RCN.23-2
Total number of wires	186 Ø 18–46 mm	
Fill factor	0.6850	
Spinning loss factor	0.8300	

Diameter mm    inch	Weight kg/100m	Min. breaking force 1770 N/mm <sup>2</sup>			Min. breaking force 1960 N/mm <sup>2</sup>			Min. breaking force 2160 N/mm <sup>2</sup>		
		kN	metric tons	lbs	kN	metric tons	lbs	kN	metric tons	lbs
18	157	256	26.1	57 300	284	29.0	63 700	On request		
19	175	286	29.2	63 900	316	32.2	70 900			
¾	176	287	29.3	64 200	318	32.4	71 400			
20	194	316	32.2	70 700	350	35.7	78 500			
21	214	349	35.6	78 000	386	39.3	86 700			
22	234	383	39.0	85 600	423	43.1	95 200			
⅞	239	390	39.8	87 500	432	44.0	97 200			
23	256	418	42.6	93 500	463	47.2	104 000			
24	279	456	46.5	101 900	504	51.4	113 300			
25	303	494	50.4	110 600	547	55.8	122 900			
1	312	510	52.0	114 300	565	57.6	127 000			
26	327	535	54.5	119 700	592	60.3	132 900			
27	353	576	58.7	129 000	638	65.0	143 400			
28	380	620	63.2	138 700	686	69.9	154 300			
1 ⅙	395	645	65.7	144 600	715	72.9	160 700			
29	407	665	67.8	148 900	736	75.0	165 400			
30	436	711	72.5	159 300	788	80.3	177 000			
31	465	759	77.4	170 100	841	85.7	189 100			

Diameter		Weight kg/100m	Min. breaking force 1770 N/mm <sup>2</sup>			Min. breaking force 1960 N/mm <sup>2</sup>			Min. breaking force 2160 N/mm <sup>2</sup>		
mm	inch		kN	metric tons	lbs	kN	metric tons	lbs	kN	metric tons	lbs
	1¼	488	797	81.2	178 600	882	89.9	198 400	On request		
32		496	809	82.5	181 300	896	91.3	201 500			
33		527	861	87.8	192 900	953	97.1	214 200			
34		560	914	93.2	204 600	1 012	103	227 500			
	1⅝	591	964	98.3	216 100	1 068	108	240 100			
35		593	969	98.8	216 900	1 072	109	241 000			
36		628	1 024	104	229 600	1 135	115	255 000			
37		663	1 082	110	242 500	1 199	122	269 500			
38		699	1 141	116	255 700	1 264	128	284 100			
	1½	703	1 147	116	257 200	1 270	129	285 700			
39		736	1 202	122	269 400	1 331	135	299 300			
40		775	1 265	128	283 400	1 400	142	314 900			
41		814	1 329	135	297 700	1 472	150	330 900			
	1.625	825	1 347	137	301 800	1 491	151	335 300			
42		854	1 394	142	312 500	1 544	157	347 200			
43		895	1 462	149	327 600	1 619	165	363 900			
44		937	1 531	156	342 900	1 694	172	381 000			
	1.75	957	1 562	159	350 000	1 729	176	388 900			
45		981	1 600	163	358 700	1 772	180	398 500			
46		1 025	1 672	170	374 800	1 852	188	416 400			

**MOBILE LIFTING**



All Terrain Crane



Rough Terrain Crane



Truck Crane



Crawler Crane

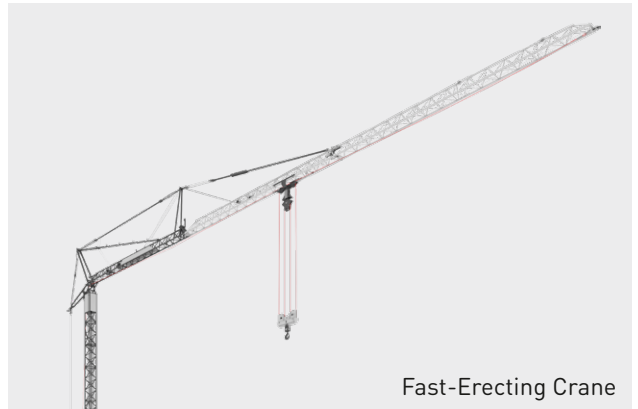
**SURFACE CONSTRUCTION**



Luffing Jib Crane



Tower Crane

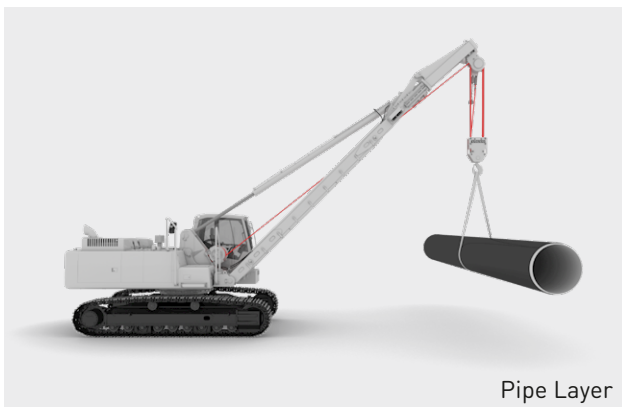
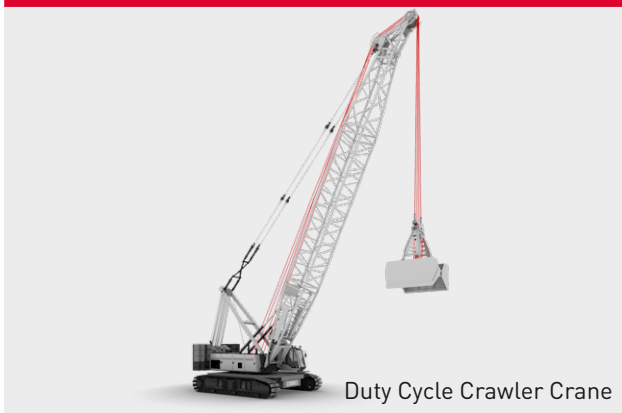


Fast-Erecting Crane



Mobile Construction Crane

## UNDERGROUND CONSTRUCTION



## MARINE + OFFSHORE

