

ROPE DESIGN OPTIONS

- DIEPA **B60** Ordinary lay
- DIEPA **B63** Ordinary lay with internal plastic component
- ▶ DIEPA **B65** Lang lay
- DIEPA **B68** Lang lay with internal plastic component

PROPERTIES

- Rotation resistant
- Compacted outer strands
- Very high breaking force

TECHNICAL DATA

Load-bearing wires	105	Ø 12–49 mm	RCN.23-2
in outer strands/	255	Ø 50–70 mm	RCN.27
RCN acc. to ISO 4309			
Total number	328	Ø 12–49 mm	
of wires	549	Ø 50–70 mm	
Fill factor	0.7357		
Spinning loss factor	0.8450	at 1770 N/mm ²	
	0.8450	at 1960 N/mm ²	
	0.8250	at 2160 N/mm ²	

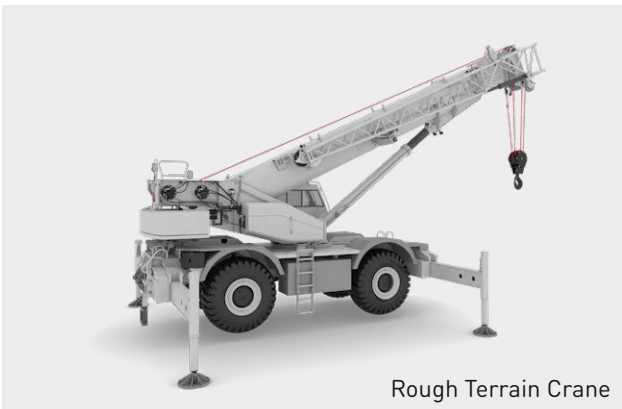
Diameter mm	inch	Weight kg/100m	Min. breaking force 1770 N/mm ²			Min. breaking force 1960 N/mm ²			Min. breaking force 2160 N/mm ²		
			kN	metric tons	lbs	kN	metric tons	lbs	kN	metric tons	lbs
12		72	123	12.5	27 600	137	14.0	30 700	148	15.1	33 000
	½	80	139	14.2	31 200	154	15.7	34 700	166	16.9	37 200
13		85	147	15.0	32 800	162	16.5	36 400	175	17.8	39 100
14		98	169	17.2	37 900	188	19.2	42 100	202	20.6	45 100
	⅝	102	176	17.9	39 400	195	19.9	43 800	209	21.3	47 000
15		112	194	19.8	43 300	215	21.9	48 200	232	23.6	51 800
	¾	125	218	22.2	49 000	243	24.8	54 600	261	26.6	58 700
16		130	223	22.7	49 900	248	25.3	55 500	266	27.1	59 700
17		145	250	25.5	56 100	278	28.3	62 300	299	30.5	67 000
18		163	281	28.6	63 100	313	31.9	70 200	337	34.4	75 300
19		181	312	31.8	69 900	347	35.4	77 800	373	38.0	83 600
	¾	181	313	31.9	70 300	348	35.5	78 200	374	38.1	84 100
20		201	347	35.4	78 000	386	39.3	86 600	416	42.4	93 000
21		224	386	39.3	86 500	428	43.6	96 200	461	47.0	103 300
22		245	422	43.0	94 700	470	47.9	105 300	505	51.5	113 200
	¾	247	430	43.8	96 700	478	48.7	107 400	514	52.4	115 400
23		267	460	46.9	103 200	512	52.2	114 700	550	56.1	123 200
24		290	500	51.0	112 300	556	56.7	124 700	598	61.0	134 000
25		309	532	54.2	119 500	592	60.3	132 800	637	64.9	142 800

Diameter mm	inch	Weight kg/100m	Min. breaking force 1770 N/mm ²			Min. breaking force 1960 N/mm ²			Min. breaking force 2160 N/mm ²		
			kN	metric tons	lbs	kN	metric tons	lbs	kN	metric tons	lbs
1		322	549	56.0	123 400	610	62.2	137 100	656	66.9	147 400
26		334	577	58.8	129 400	640	65.2	143 800	689	70.2	154 400
27		360	620	63.2	139 200	689	70.2	154 600	740	75.4	166 100
28		394	678	69.1	152 400	754	76.9	169 400	811	82.7	181 800
1 1/8		407	702	71.6	157 600	780	79.5	175 300	837	85.3	188 100
29		417	719	73.3	161 500	800	81.5	179 600	860	87.7	192 700
30		446	770	78.5	172 900	856	87.3	192 200	919	93.7	206 200
31		474	818	83.4	183 700	909	92.7	204 100	977	99.6	219 200
1 1/4		503	862	87.9	193 600	958	97.7	215 200	1 029	104	231 100
32		509	877	89.4	197 000	975	99.4	219 000	1 048	106	235 200
33		540	931	94.9	209 200	1 035	105	232 400	1 113	113	249 600
34		575	990	100	222 400	1 100	112	247 100	1 183	120	265 500
1 3/8		609	1 049	106	235 700	1 166	118	261 900	1 252	127	281 400
35		612	1 054	107	236 700	1 171	119	263 100	1 258	128	282 600
36		647	1 115	113	250 500	1 240	126	278 400	1 332	135	299 000
37		684	1 178	120	264 600	1 309	133	294 000	1 406	143	315 900
38		721	1 243	126	279 200	1 381	140	310 100	1 483	151	333 100
1 1/2		725	1 249	127	280 600	1 388	141	311 800	1 490	151	334 800
39		759	1 309	133	294 000	1 455	148	326 800	1 562	159	350 900
40		799	1 377	140	309 400	1 530	155	343 600	1 643	167	369 100
41		839	1 446	147	325 000	1 608	163	361 100	1 727	176	387 800
1 5/8		850	1 466	149	329 400	1 629	166	366 000	1 750	178	393 100
42		880	1 518	154	341 000	1 687	171	378 900	1 812	184	406 900
43		923	1 591	162	357 400	1 769	180	397 200	1 899	193	426 500
44		966	1 666	169	374 300	1 851	188	415 800	1 989	202	446 700
1 3/4		986	1 700	173	382 000	1 889	192	424 400	2 029	206	455 900
45		1 011	1 743	177	391 500	1 936	197	435 000	2 080	212	467 300
46		1 056	1 821	185	409 100	2 023	206	454 500	2 173	221	488 300
47		1 102	1 901	193	427 100	2 113	215	474 600	2 269	231	509 700
1 7/8		1 132	1 952	198	438 600	2 169	221	487 400	2 329	237	523 400
48		1 149	1 983	202	445 500	2 203	224	495 000	2 366	241	531 600
49		1 198	2 067	210	464 200	2 296	234	515 800	2 466	251	554 000
50		1 248	2 152	219	483 400	2 391	243	537 100	2 567	261	576 800
2		1 288	2 221	226	499 000	2 467	251	554 400	2 650	270	595 400
51		1 298	2 239	228	502 900	2 488	253	558 800	2 672	272	600 200
52		1 350	2 327	237	522 800	2 586	263	581 000	2 778	283	624 000
53		1 402	2 417	246	543 200	2 687	273	603 600	2 885	294	648 200
2 1/8		1 454	2 507	255	563 400	2 786	283	626 100	2 992	304	672 400
54		1 455	2 510	255	563 800	2 788	284	626 600	2 995	305	672 900
55		1 509	2 603	265	585 100	2 893	294	650 100	3 107	316	698 100
56		1 565	2 699	275	606 400	2 999	305	673 900	3 221	328	723 700
57		1 621	2 803	285	628 300	3 105	316	698 100	3 340	340	749 700
2 1/4		1 630	2 811	286	631 600	3 123	318	701 800	3 354	341	753 700
58		1 679	2 902	295	650 500	3 214	327	722 800	3 459	352	776 300
59		1 737	3 004	306	673 100	3 326	339	748 000	3 578	364	803 300
60		1 796	3 106	316	696 200	3 440	350	773 500	3 701	377	830 800
2 3/8		1 814	3 132	319	703 900	3 480	354	782 100	3 738	381	839 900
61		1 857	3 211	327	719 600	3 555	362	799 600	3 825	389	858 800
62		1 918	3 317	338	743 300	3 673	374	826 000	3 951	402	887 100
63		1 981	3 424	349	767 600	3 792	386	852 900	4 080	415	916 100
2 1/2		2 012	3 470	353	779 800	3 856	393	866 500	4 141	422	930 600
64		2 044	3 534	360	792 100	3 913	398	880 200	4 211	429	945 300
65		2 108	3 646	371	817 100	4 037	411	907 900	4 343	442	975 200
66		2 173	3 759	383	842 400	4 162	424	936 000	4 478	456	1 005 400
2 5/8		2 218	3 826	390	859 900	4 252	433	955 400	4 566	465	1 026 100
67		2 240	3 873	394	868 100	4 289	437	964 700	4 615	470	1 036 000
68		2 308	3 990	406	894 200	4 418	450	993 700	4 754	484	1 067 200
69		2 376	4 108	418	920 800	4 549	463	1 023 100	4 894	498	1 098 800
2 3/4		2 434	4 199	428	943 600	4 665	475	1 048 400	5 011	510	1 126 000
70		2 446	4 228	430	947 700	4 681	477	1 052 900	5 037	513	1 130 800

MOBILE LIFTING



All Terrain Crane



Rough Terrain Crane



Truck Crane

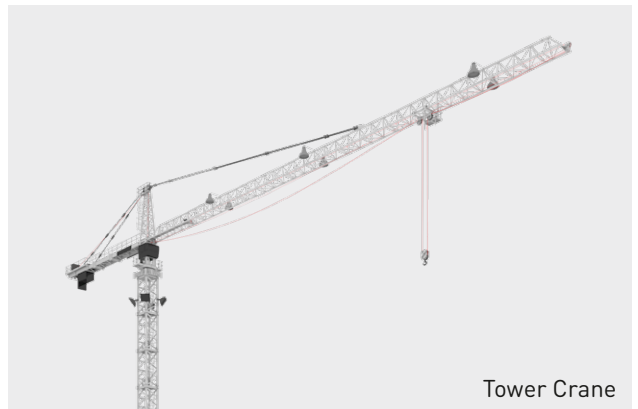


Crawler Crane

SURFACE CONSTRUCTION



Luffing Jib Crane



Tower Crane

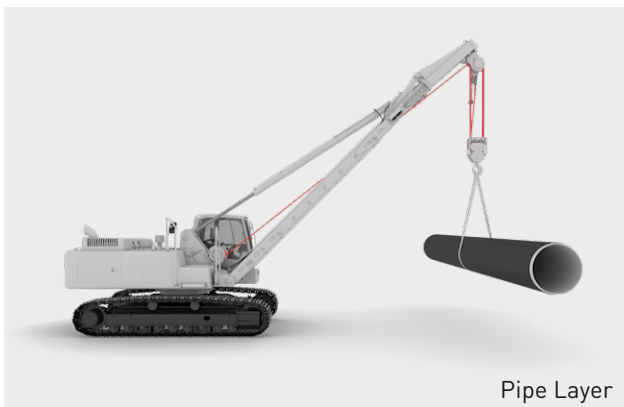


Fast-Erecting Crane



Mobile Construction Crane

UNDERGROUND CONSTRUCTION



MARINE + OFFSHORE

